

**Grade: Preliminary**

Right Hand



Left Hand



**Grades: 1 to 3**

Right Hand



Left Hand



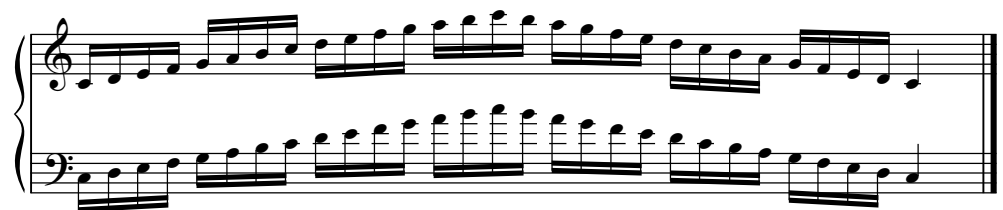
**Grades: 4 to 6**

Parallel motion



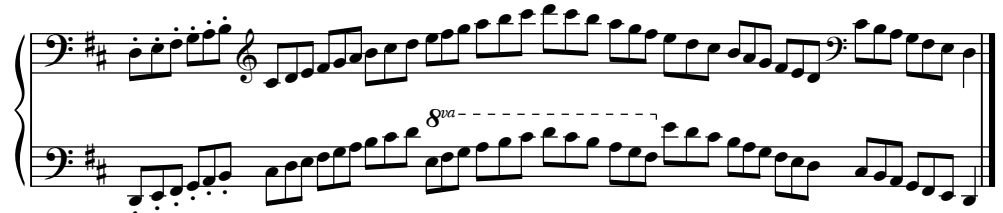
**Grades: 7 to Diploma**

Parallel motion



**Grades: 9 to Diploma**

Staccato triplets (supplemental)



**Grades: 9 to Diploma**

Poly-rhythm, two against three



# Technical Requirements - Scales

---

## Grades: 5 to 6

Formula pattern

Musical notation for Grades 5 to 6, Formula pattern. It consists of two systems of piano accompaniment. The first system shows the right hand (treble clef) and left hand (bass clef) playing a scale in parallel motion. The second system shows the continuation of the scale, ending with a double bar line.

## Grades: 7 to Diploma

Parallel motion

Musical notation for Grades 7 to Diploma, Parallel motion. It consists of two systems of piano accompaniment. The first system shows the right hand (treble clef) and left hand (bass clef) playing a scale in parallel motion. The second system shows the continuation of the scale, ending with a double bar line.

## Grades: 10 to Diploma

Parallel motion in thirds

Musical notation for Grades 10 to Diploma, Parallel motion in thirds. It consists of two systems of piano accompaniment. The first system shows the right hand (treble clef) and left hand (bass clef) playing a scale in parallel motion in thirds. The second system shows the continuation of the scale, ending with a double bar line.

## Grades: 10 to Diploma

Parallel motion in sixths

Musical notation for Grades 10 to Diploma, Parallel motion in sixths. It consists of two systems of piano accompaniment. The first system shows the right hand (treble clef) and left hand (bass clef) playing a scale in parallel motion in sixths. The second system shows the continuation of the scale, ending with a double bar line.

**Grades: 3 to 5**

Chromatic

Musical notation for a chromatic scale, Grades 3 to 5. It consists of two staves: a treble clef staff and a bass clef staff. The treble staff starts on middle C and ascends chromatically to G4, then descends chromatically to C4. The bass staff starts on C3 and descends chromatically to F2, then ascends chromatically to C3.

**Grade: 6**

Chromatic

Musical notation for a chromatic scale, Grade 6. It consists of two staves: a treble clef staff and a bass clef staff. The treble staff starts on middle C and ascends chromatically to G4, then descends chromatically to C4. The bass staff starts on C3 and descends chromatically to F2, then ascends chromatically to C3.

**Grades: 9 to Diploma**

Chromatic

Musical notation for a chromatic scale, Grades 9 to Diploma. It consists of two staves: a treble clef staff and a bass clef staff. The treble staff starts on middle C and ascends chromatically to G4, then descends chromatically to C4. The bass staff starts on C3 and descends chromatically to F2, then ascends chromatically to C3.

**Grades: 9 to Diploma**

Octaves

Musical notation for an octaves scale, Grades 9 to Diploma. It consists of two staves: a treble clef staff and a bass clef staff. The treble staff starts on middle C and ascends in octaves to G4, then descends in octaves to C4. The bass staff starts on C3 and descends in octaves to F2, then ascends in octaves to C3.

**Grades: 9 to Diploma**

Octaves

Musical notation for an octaves scale, Grades 9 to Diploma. It consists of two staves: a treble clef staff and a bass clef staff. The treble staff starts on middle C and ascends in octaves to G4, then descends in octaves to C4. The bass staff starts on C3 and descends in octaves to F2, then ascends in octaves to C3.