



British Columbia
Conservatory of Music

Grade 8

Theory

Examination

December 2019

Candidate Number: _____

Mark: _____/100

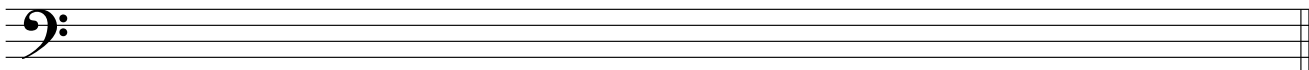


Answer all questions in the space provided.

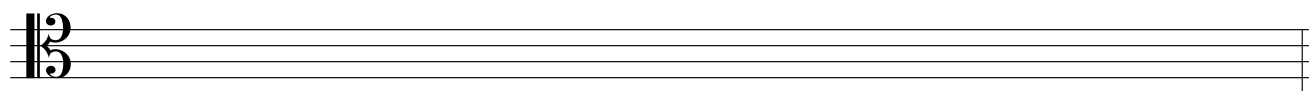
10

1. Write the following scales, **ascending and descending** using **whole notes**:

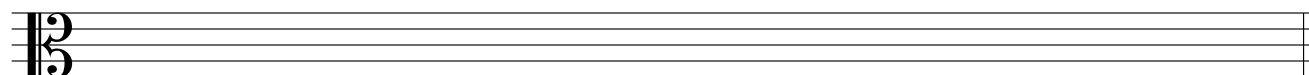
a) C sharp minor melodic from **dominant to dominant** using a key signature. Mark the semitones with a slur.



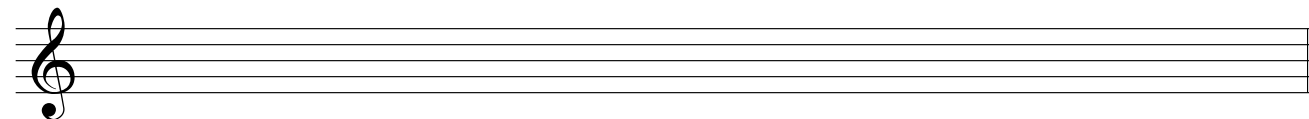
b) D flat major from **leading note to leading note** using a key signature.



c) **Phrygian** mode starting on **D**.



d) E flat minor harmonic from **tonic to tonic** using accidentals instead of a key signature.



2. Name the key of the following passage.

Transpose it **up** an **augmented 4th** using the key signature of the new key. Name the new key.

10

Moderato Anon.

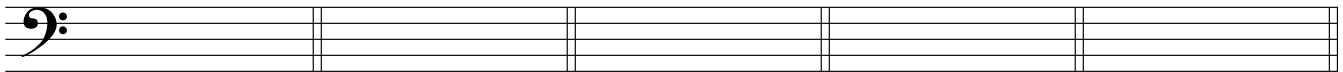
Key: _____

New Key: _____

3. Write the following using accidentals instead of a key signature:

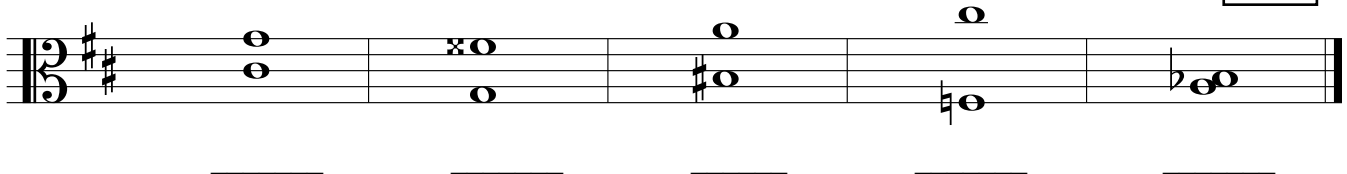
10

- a) the *supertonic* triad of E flat major in first inversion.
- b) the *dominant* triad of C sharp minor in first inversion; based on the *natural* minor scale.
- c) the *tonic* triad of B minor in root position; based on the *harmonic* form of the scale.
- d) the *mediant* triad of D flat major in second inversion.
- e) the *dominant* triad of C minor in first inversion; based on the *harmonic* form of the scale.

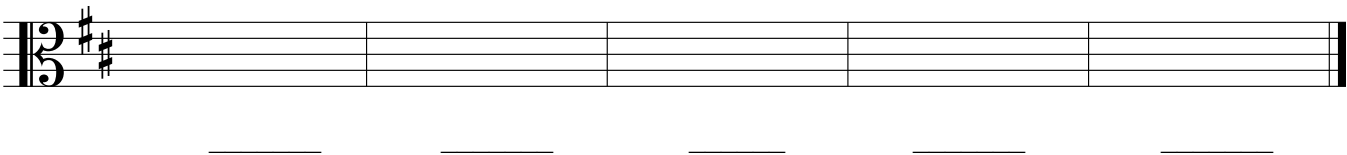


4. a) Name the following intervals.

10



b) Invert the above intervals and name the inversions.

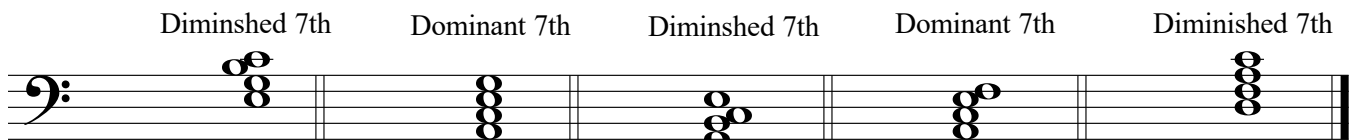


5. The key has been given for each of the following **dominant 7th and diminished 7th chords**.

Complete the question by:

- 1) adding the *key signature* for each.
- 2) adding necessary *accidentals* to each.
- 3) naming the *root* for each.
- 4) naming the position for each using *functional chord symbols*.

10



	Diminished 7th	Dominant 7th	Diminished 7th	Dominant 7th	Diminished 7th
Key:	F minor	D ^b major	D minor	B major	E ^b minor
Root:					
Position:					

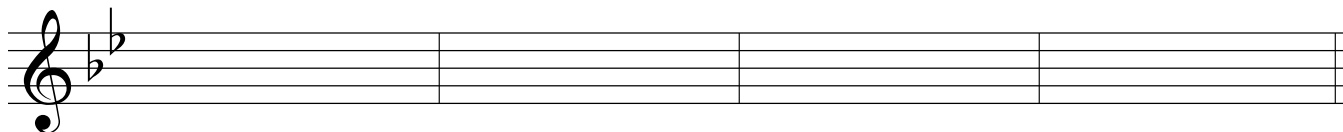
6. For the following melody composition question:

10

- a) Name the key
- b) Complete the first phrase and end on an unstable note.
- c) Compose a *contrasting answering phrase* and end on a stable note.
- d) Draw appropriate phrase marks.



Key: _____



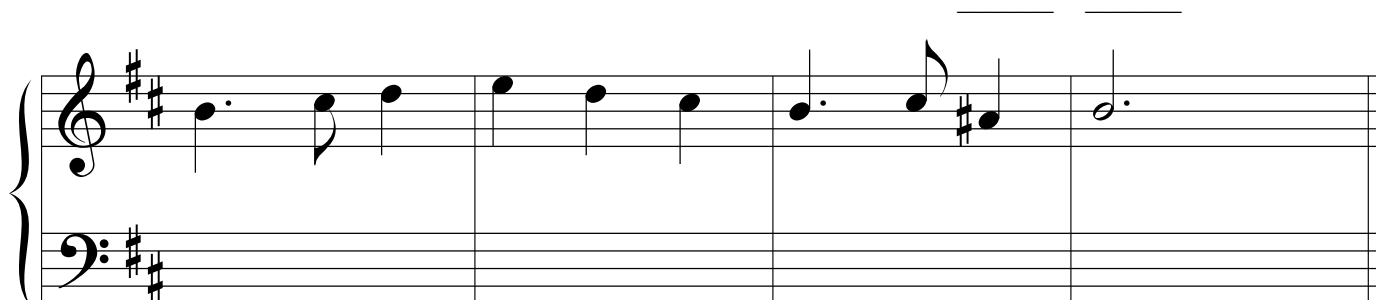
- 7. a) Name the key of the following melody.
- b) Write a cadence in *Keyboard Style* or *Chorale Style* at the end of each phrase.
- c) Name each cadence.
- d) Write the *root quality* chords symbols above each cadence.
- e) Add rests in measures where required.

10



Key: _____

Cadence: _____



Cadence: _____

8. Match each term in the *left* column with its English definition in the *right* column.

10

- | | |
|--|---|
| Example: <i>forte</i> <u> <i>e</i> </u> | a) in a hurrying manner |
| <i>attaca</i> _____ | b) slowly |
| <i>bewegt</i> _____ | c) not too much |
| <i>doux</i> _____ | d) play with a bow |
| <i>stringendo</i> _____ | e) loud |
| <i>arco</i> _____ | f) suddenly slower, held back |
| <i>lentement</i> _____ | g) proceed to the next section without hesitation |
| <i>vite</i> _____ | h) at a comfortable easy-going speed |
| <i>comodo</i> _____ | i) sweet, gentle, calm |
| <i>non troppo</i> _____ | j) moving |
| <i>ritenuto</i> _____ | k) fast |

10

9. Add rests in the places indicated by brackets to complete each of the following measures.

The image shows three musical staves in treble clef, each with three measures. Brackets above the staves indicate where to add rests to complete the measures.

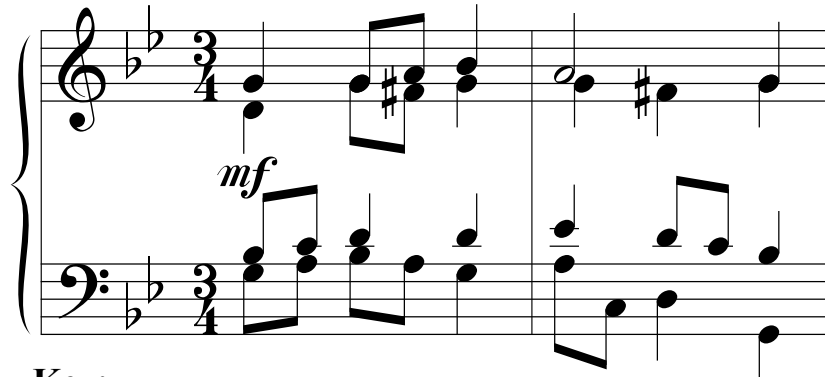
- Staff 1:**
 - Measure 1: 6/16 time signature, contains one eighth note. A bracket above the staff spans the rest of the measure.
 - Measure 2: 7/8 time signature, contains one eighth note. A bracket above the staff spans the rest of the measure.
 - Measure 3: 12/8 time signature, contains two eighth notes. A bracket above the staff spans the rest of the measure. A bracket below the staff under the second eighth note is labeled "2", indicating a half rest.
- Staff 2:**
 - Measure 1: 3/4 time signature, contains one quarter note. A bracket above the staff spans the rest of the measure.
 - Measure 2: 2/8 time signature, contains one eighth note. A bracket above the staff spans the rest of the measure.
 - Measure 3: 3/8 time signature, contains two eighth notes. A bracket above the staff spans the rest of the measure.
 - Measure 4: 3/8 time signature, contains two eighth notes. A bracket above the staff spans the rest of the measure.
- Staff 3:**
 - Measure 1: 5/4 time signature, contains two quarter notes. A bracket above the staff spans the rest of the measure.
 - Measure 2: 4/8 time signature, contains one quarter note. A bracket above the staff spans the rest of the measure.
 - Measure 3: 6/4 time signature, contains three quarter notes. A bracket above the staff spans the rest of the measure. A bracket below the staff under the last two quarter notes is labeled "4", indicating a whole rest.

10. Name the key of the following passage. Complete question A **and** question B.

10

Chorale 109

J.S. Bach



Key: _____

Question A. (5marks)

Rewrite the above passage for **String Quartet**.
Name the instruments in the space provided above each staff.

Question B. (5marks)

Rewrite the above passage for **Modern Vocal Score** (also known as **Novello Score**).

-- End of Examination --

- Rough Work -

The page contains ten sets of blank musical staves, each consisting of five horizontal lines. These staves are arranged vertically and are separated by a thin horizontal line. The top and bottom of the page are also bounded by thin horizontal lines.