

Performance - Keyboard style

Grade 5

Playing

The student should be prepared to play four chord progressions in keyboard style, each consisting of 6-8 chords. Progressions can be found in the BCCM grade 5 technique and studies book. Memory is not required.

Keys: E+, E-, F+, F-



C F C C7 Dm G7 C

I IV I V7/IV ii V7 I

Listening

Intervals

The student will be asked to identify the following intervals: **+3, -3, P4, P5, P8**, ascending and descending. Candidate's choice: to *name* or *sing* (to "lah") the intervals.

Chords and Cadences

The student will be asked to:

- 1) identify the Tonic chord as major or minor.
- 2) identify cadences as: Open-Half, Closed-Plagal or Closed-Authentic

The examiner will play the Tonic chord once, the candidate will identify it as major or minor.

The examiner will play the 5-chord passage *once*, the candidate will identify the cadence as: "*V-I, Closed-Authentic*" for example. Progressions can be found in the BCCM grade 5 technique and studies book.

Keys: E^b+, E-



C C G C F C C A min F G C

I Tonic I V I IV I Closed-Plagal I vi IV V I Closed-Authentic

C Am F C G C F C Dm/F G C G C F G

I vi IV I V I IV I ii6 V I V I IV V Open-Half Open-Half Open-Half

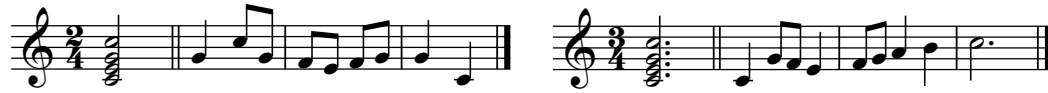
Listening

Grade 5

≡ Melody Playback

The student will be asked to play back a melodic phrase involving steps, skips and repeated notes, with a possible jump from tonic to dominant, or reverse, in the key of C+, G+, D+ or F+ starting on the tonic, dominant or upper tonic note.

The examiner will: name the key and the time signature, count one measure then play the tonic chord *once* and the melody *twice*.



Sight Reading

≡ Rhythm

Clap or tap a single rhythmic passage according to the time signatures indicated herein.



≡ Playing

Play at sight, approximately 8 bars of music comparable to Grade 2 repertoire.

